



# Pro Sulky 2003

## Professional Series Sulky



# Owner's Manual

555 Goodrich Rd  
Bellevue, OH 44811  
419-483-9918

419-483-8128 fax

[www.selbro.com](http://www.selbro.com)

[Salesinfo@selbro.com](mailto:Salesinfo@selbro.com)



We would like to thank you for your purchase of our professional grade sulky, noted by landscape professionals as one of the best in the industry. All of our products are fabricated and assembled using quality parts and heavy gage steel materials in our Bellevue, Ohio facility. This unit, when properly maintained, should provide years of useful life.

Your LandShark Team

## Contents

	Section	Page
1.	Safety	3
2.	Assembly/Installation	4
3.	Maintenance/Storage	7
4.	Parts Breakdown Diagram	8
5.	Parts List	9



# Safety

1. Read, understand and follow all mower manufacturer's operation and safety instructions. You should become completely familiar with all safety controls and how to start and stop your mower safely. Know the location and function of all operator presence controls that automatically shut the mower off when you release the handles.
2. Use equipment at slow speeds until you become completely familiar with both mower and sulky.
3. Check the area before mowing with sulky. Be aware of any holes, drop-offs, tree limbs or branches, as the sulky swings out on turns and moves up and down over the terrain.
4. Do not operate in rough terrain or too close to obstacles.
5. Clear area to be mowed with sulky of any objects such as rocks, toys, wire, tree limbs, etc.
6. Never carry passengers.
7. Slow down before turning; avoid erratic operation and excessive speeds.
8. Do not operate sulky while under the influence of alcohol or drugs.
9. Wear sturdy, rough-soled work shoes. Never operate or use sulky in bare feet or sandals.
10. Do not use sulky near drop-offs, ditches or embankments! A wheel over the edge or an edge caving-in could cause a sudden overturn of sulky and mower.
11. This sulky is designed to move with the mower it is attached to, the operator should remain on the sulky and use care when maneuvering backward.
12. Mowing or using your sulky on all slopes requires extra caution.
13. Use slow speeds. Keep all movements on the slopes slow and steady. Do not make sudden changes in speed or direction. Quick acceleration or braking could cause the front of the mower to lift, tip sideways or slide, which could cause serious injury.
14. Avoid starting or stopping on any hillside. If tires lose traction, disengage mower blades and move slowly straight across the slope or hillside.

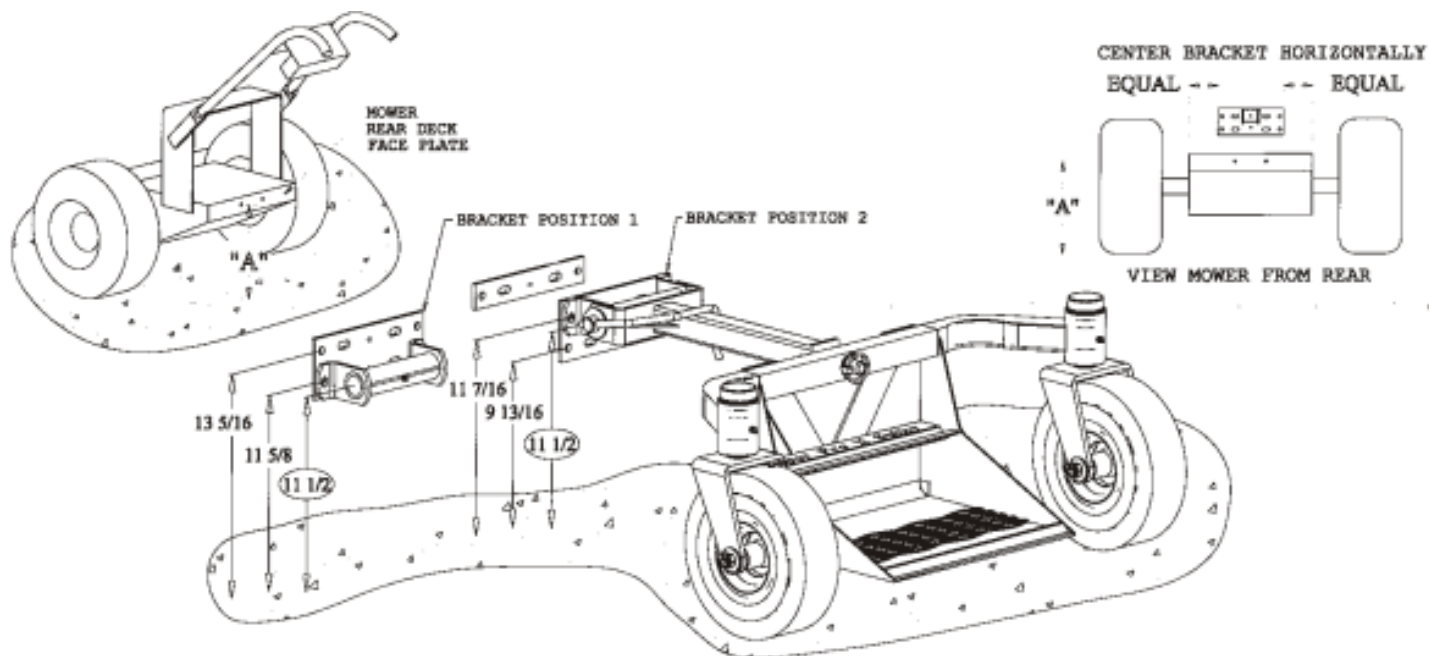


15. Do not turn on slopes unless necessary. If absolutely necessary, turn slowly and gradually across and down slope / hillside.
16. Do not mow or use sulky on wet grass as it will increase or cause sliding.
17. Do not mow up or down hillsides or slopes over 10° while using sulky.
18. Use extra care when moving equipment on and off trailer. Do not ride on sulky when loading or unloading.

**Attention: Failure to grease the wheel assembly and pivot points on a daily basis will void the warranty and significantly decrease the useful life of your sulky.**

## Assembly/Installation

1. Universal Bracket Installation Guide (1038-1)
  - a. Disengage the mower PTO and make sure the engine is off. Remove the ignition key to prevent accidental start.
  - b. As illustrated below, the mounting bracket is designed to mount on the mower rear deck face plate.

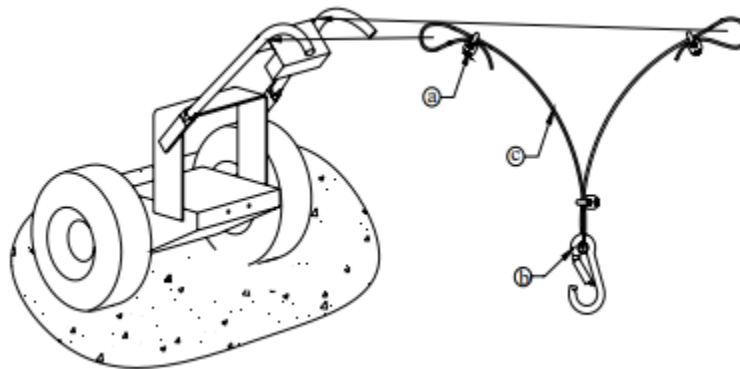




- i. The bracket must be centered horizontally on the mower deck rear face plate.
- ii. The bracket center pin vertical dimension should be maintained at approximately 11-1/2 inches as illustrated.
- iii. Clamp the bracket on the rear deck face plate. Make sure the bracket is aligned both vertically and horizontally.
- iv. Check the sulky deck platform for level and adjust as necessary.
- v. Drill holes using 3/8 inch drill bit. **Note:** Before drilling, make sure to inspect behind the face plate for belts and pulleys or electrical wiring.
- vi. After drilling, bolt the bracket in place using supplied hardware. Be sure to use ALL four or six bolts as supplied.
- vii. Bolts and be inserted through face plate in either direction.

## 2. Transport / Hang Up Guidelines

- a. A cable hook-up kit is supplied with each sulky.
- b. Due to the many different types of mower handles and the location of operator presence controls, we can only offer the following illustrated transport / hook-up suggestion:



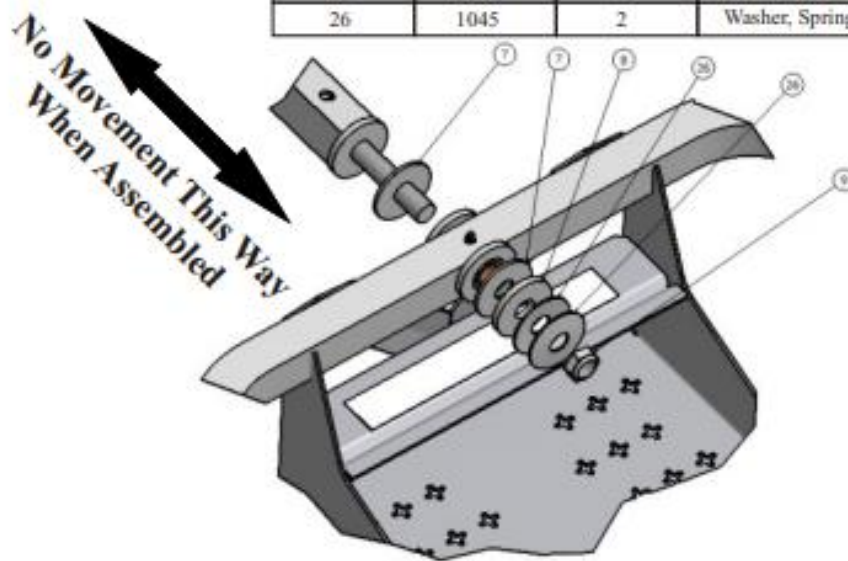
- c. Cable Kit includes:
  - a – Cable Clamp (3) #1063
  - b – Snap Hook (1) #1064
  - c – Length of Cable (4ft) #1065

## 3. Linkage Arm Washer Assembly Sequence

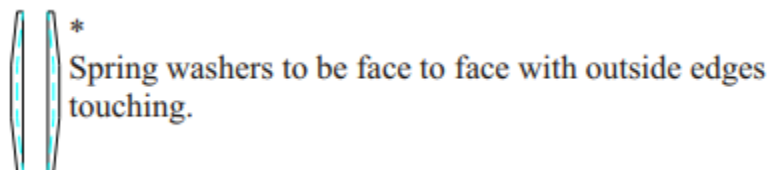
- a. Place thrush washer (#7) over forearm shaft (#6).
- b. Insert forearm shaft (#6) through support arm pivot hole (#10).



Ref #	Part #	# Required	Description
6	1523	1	Forearm, Pivot Linkage
7	1046	2	Thrust Washer
8	1012	1	Washer, Special H.D.
9	1034	3	Nut, ESN
10	1050	1	Deck Pan
26	1045	2	Washer, Spring



- c. Place thrust washer (#7), HD washer (#8) on shaft (#6).
- d. Place (2) spring washers (#26) on shaft (#6). The spring washers should be face to face as illustrated.

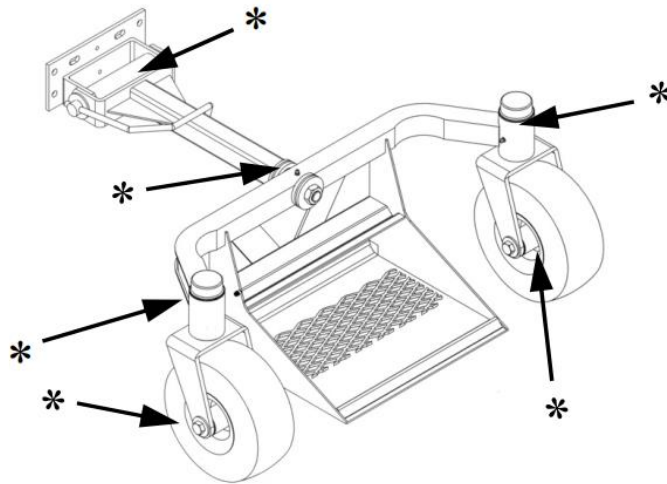


- e. Turn nut (#9) using a 5/16" deep well socket or open-end wrench until nut is snug and there is NO endplay.



## Maintenance/Storage

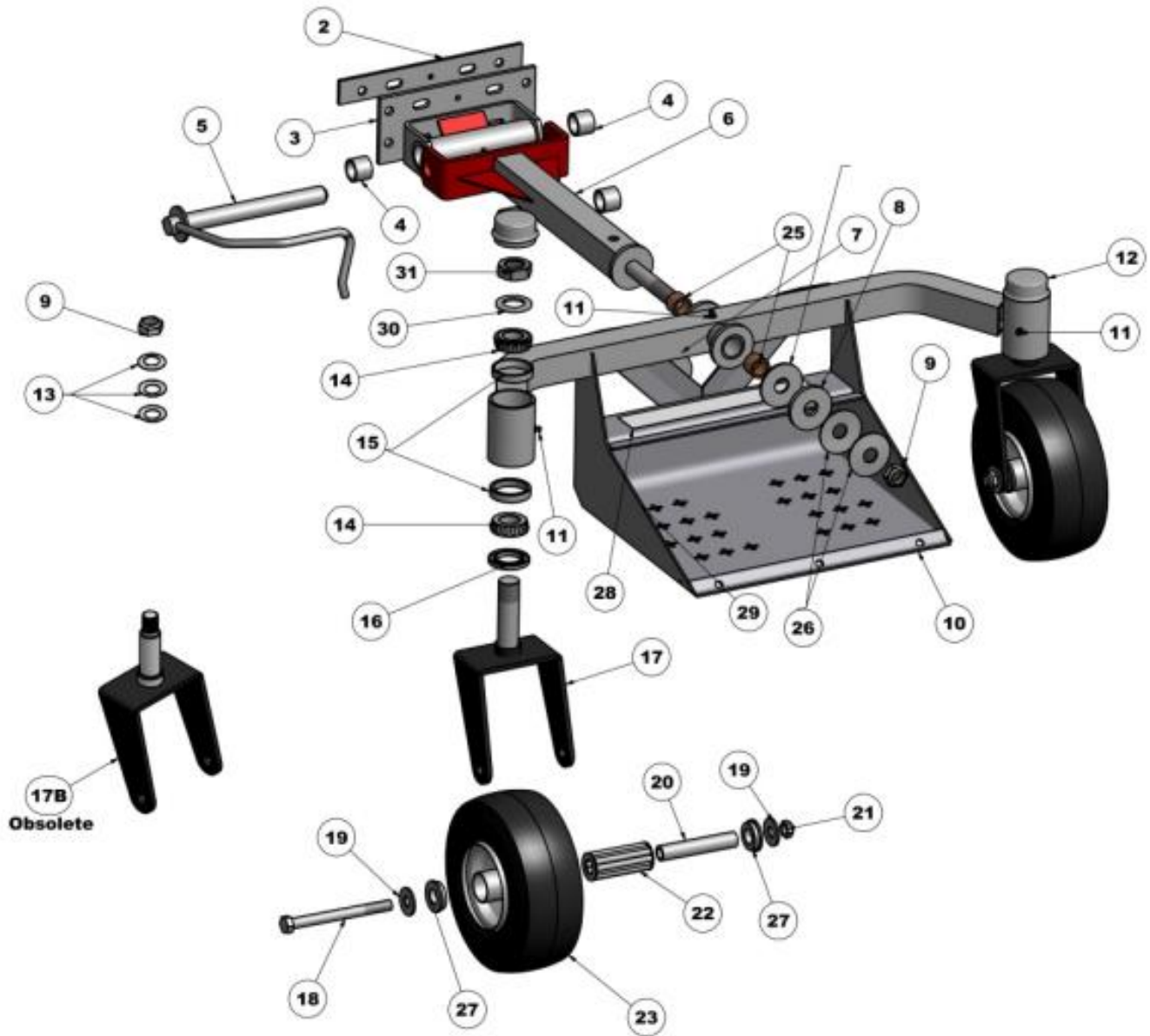
1. This Sulky is shipped from the factory without grease. Grease where indicated (\*) before each use. **It is very important to grease all points often.** This will extend the life of the wheel assembly and all pivot components. **We can not express this enough!**



2. The sulky is equipped with a kick pin (9) that allows the sulky to be removed for storage during loading and unloading the mower from a trailer.
3. To store, use the cable kit provided to raise the sulky and use the snap hook to secure the unit in the upright position.



## Parts Breakdown Diagram



**Note: There are optional mounting brackets for Ferris and Exmark.**





## Parts List

Item	Qty	Part Number	Description
1	1	1020	Bolt Kit, Mounting Bracket (not shown)
2	1	1021	Stiffener Backing Plate (Optional)
3	1	1038-2HD	Mounting Bracket Assembly (Designate Color)
4	2	1018	Sintered Bushing, Iron
5	1	1035	Kick Pin
6	1	1039-2	Forearm, Pivot Linkage (Designate Color)
7	2	1046	Washer, Thrush, Bronze
8	1	1012	Washer, Special Heavy Duty
9	1	1034	Nut, ESN
10	1	1399 / 1050	Deck Pan Assembly (Designate Color)
11	6	1032	Grease Fitting
12	2	1036	Dust Cap
13	6	1019	Washer, Spring
14	4	1043	Cone, Tapered Bearing
15	4	1024	Cup, Tapered Bearing
16	2	1015	Seal, Grease
17	2	1030	Yoke, Wheel 1" Shaft (Designate Color)
17B	2	Obsolete	Yoke, Wheel 3/4" Shaft
18	2	1027	Bolt, Axle
19	4	11033 / 1016	Washer, Standard Flat
20	2	1033	Bushing, Spanner
21	2	1028	Nut, ESN
22*	2	1017-2RB	Bearing, Heavy Duty Roller
23	1	1040	Wheel Assembly w/Bearings, Pneumatic
23		1040FF	Wheel Assembly w/Bearings, Flat Free
24	1	1011	Kit, Cable Hang Up (not shown)
25	2	1042	Bushing, Bronze
26	2	1045	Washer, Spring
27*	4	1017KP	Bushing, Bearing Retainer
28	1	05864	Pro-Sulky Label
29	1	SR#	Serial Number Tag (not visible)
30	1	11664	Washer
31	1	11990	Nut, Jam

\* **Note: Items 22 & 27 are sold as kit number 1017-2RBK**

Shipping Weight approximately 57 lbs.